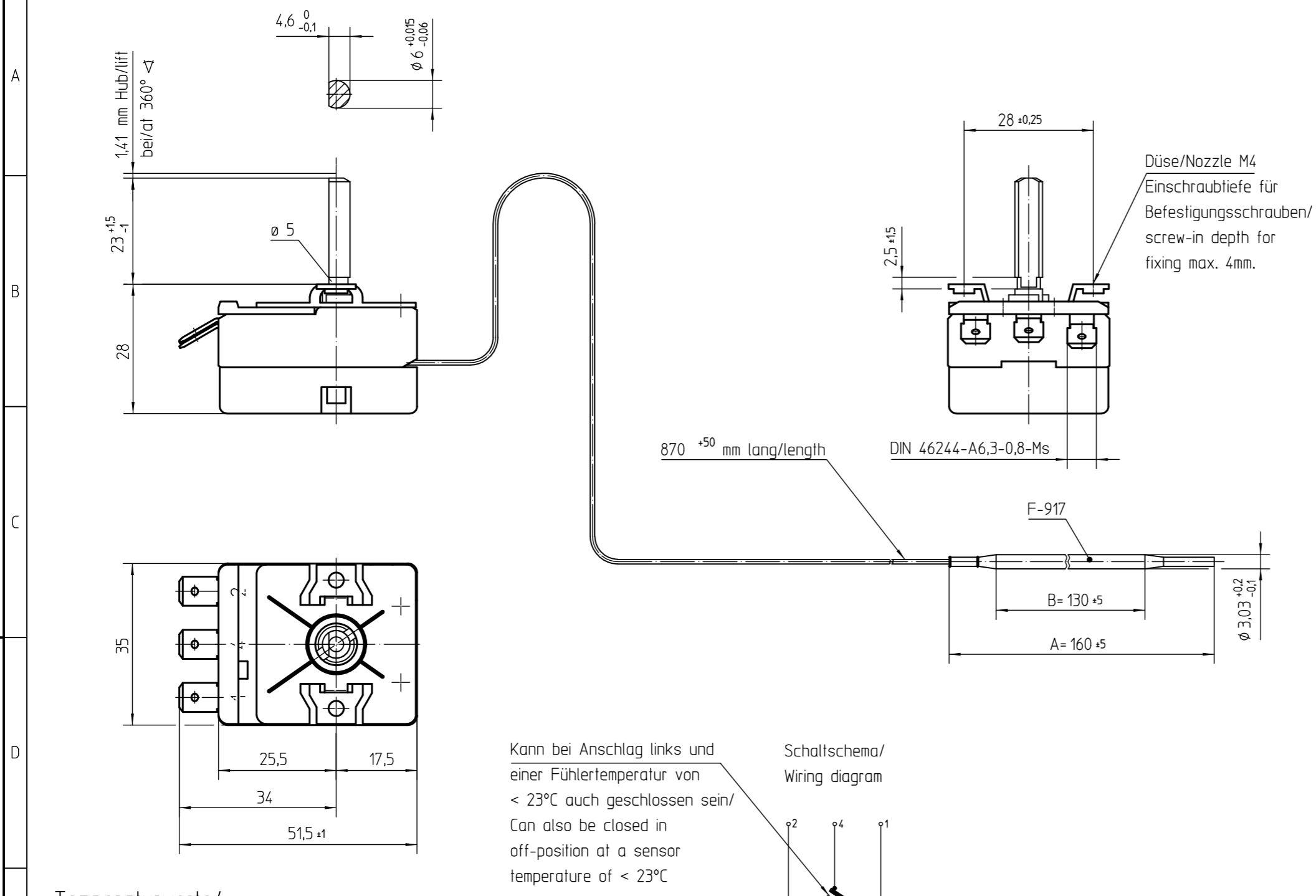


Doc.ID 55.13262.010-901-02-A Doc. status 2301 released  
 View date 2017-01-18 Viewed by BENDER  
 Art.ID 55.13262.010-00/69A SAP Status 2F

1 2 3 4 5 6 7 8



Temperaturregler bei Spindelstellung Anschlag links gezeichnet/  
 Thermostat drawn in minimum position

Genehmigte technische Daten/Approved technical data  
 55.13000.000 Bl. 901

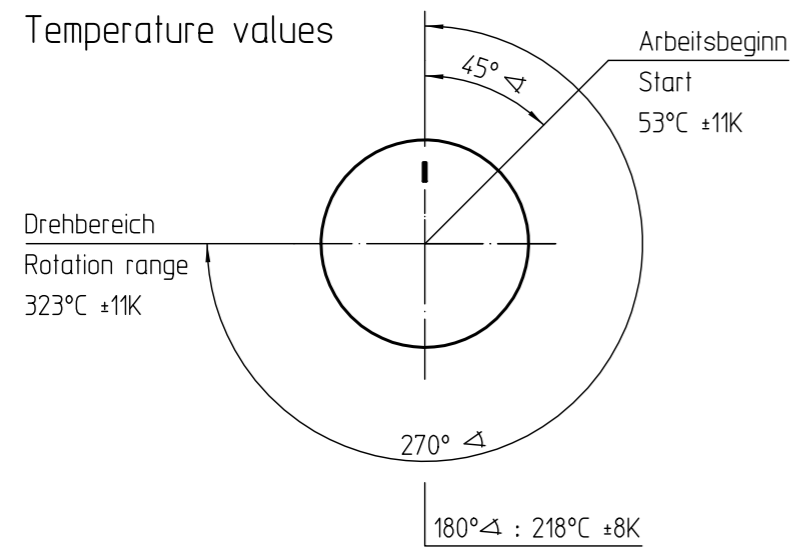
Bemerkungen/Notes:

Normalklima/Standard atmosphere DIN EN 60068-1 (23±2)°C  
 Temperaturen sind AUS Werte für/  
 Temperatures are OFF values for: 1-2  
 Schaltdifferenz/Differential: (6±3)K  
 (im Werksnormbad/in E.G.O. standard bath)  
 Min. Fühlertemperatur/Min. sensor temperature: -10°C  
 Max. Fühlertemperatur/Max. sensor temperature: 330°C  
 kurzzeitig/temporary 340°C für insgesamt max. 250h  
 bezogen auf Lebensdauer/  
 for overall max. 250h related to the life cycle  
 (aus Sicherheitsgründen/for security reasons)  
 Schnappfeder/snap action spring: NiBe  
 Max. Gehäusetemperatur/Max. housing temperature (VDE): 150°C  
 Max. Gehäusetemperatur/Max. housing temperature (UL): 120°C  
 Min. Biegeradius Kapillarrohr/  
 Min. bending radius of capillary tube: 5 mm  
 Für Einsatz in Umgebungsbedingungen mit normaler Verunreinigung/  
 For application with normal pollution level (Typ 1 B)  
 Kunden-Zeichnungs-Nr./Customer drawing-No.:

Kann bei Anschlag links und einer Fühlertemperatur von < 23°C auch geschlossen sein/  
 Can also be closed in off-position at a sensor temperature of < 23°C

Schaltschema/  
 Wiring diagram

Temperaturwerte/  
 Temperature values



➡ Korrekturfaktor/correction factor: c = 0,51 [K/K]  
 (bez. auf Umgebungstemp./based on ambient temperature)

This document is exclusively committed to you for the agreed purpose. Any kind of duplication, utilization or communication of its content is prohibited, if not expressly conceded otherwise. Violators are committed to pay compensations. Any claims of existing or future property rights remain unaffected.				Blank No. .	EN Mat.No. .	Scale Unit mm
				Material .		Scale 1:1
				Surface Texture ISO 1302		
				General Tolerances ISO 2768-v		
3	E15743	2011-08-16		Designation		
2	CD0001	2010-12-15	CAD	Date	Name	EGO Temperaturregler
1	E12288	2009-03-13	Create.	2004-08-17	POSOVSKY	EGO Thermostat
Cha.	Information No.	Date	Proc.	2011-08-16	POSOVSKY	
F.Rel.	E03147	2004-08-17	Rel.	2011-08-16	SCHLAGET	
Origin .				Repl.for 55.13262.010 Bl001	Repl.by .	Ref. .
				Drawing No.	Sh.No.	Ver.
				55.13262.010	901	2 F
				1		